

AUTOMATIC BUTTERFLY VALVE**PROJECT SPECIFICATION**

Number

E-H6280-241

Sheet : 4 of 15

By : F. Heyman

Rev.

3

REV

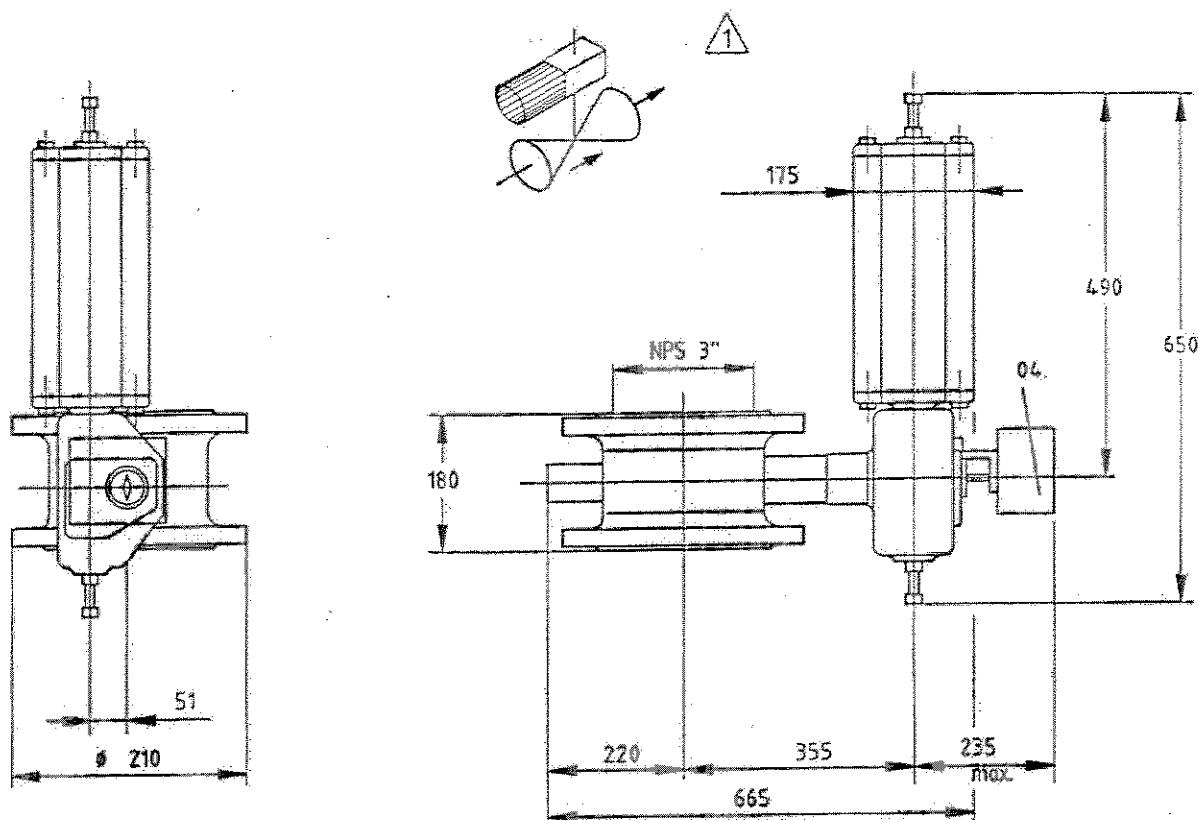
1	TAG NO.	
2		U-XV75012, 75022, 75032, 75042, 75052, 75062
3	QUANTITY	U-XV75072, 75082, 75092, 75102
4	SERVICE	10
5	MEDIUM COMPOSITION MOLECULAR WEIGHT	PRODUCT
6	AMBIENT TEMPERATURE MIN. / MAX.	HYDROGEN / H ₂ / 2,03
7	MINIMUM DESIGN METAL TEMPERATURE	- 46 / + 36 °C ACTUATOR POSITIONER LIMIT SW (note 1)
8	OPERATING TEMPERATURE MIN. / MAX.	-34 °C FOR VALVE BODY AND SEALS
9	OPERATING FLOW COND. 1 / 2 / 3	45,0 / 45,0 °C
10	PRESSURE UPSTREAM COND. 1 / 2 / 3	6804 / 17010 / 31400 Nm ³ /h
11	DP COND. 1 / 2 / 3	38,33 / 38,32 / 38,28 kg/cm ² g
12	DP IN CLOSED POSITION	0,006 / 0,042 / 0,143 kg/cm ²
13	REQUIRED C _v COND. 1 / 2 / 3	39,0 kg/cm ²
14	VALVE BODY SIZE RATING STYLE	162 / 162 / 162
15	SELECTED CV CHARACTERISTIC	DN 80 / 300 lbs / DOUBLE FLANGED
16	BODY MATERIAL	180 / ON-OFF
17	FLANGE RATING FLANGE FACE FINISH	ASTM 352 LCB (-34°C)
18	FACE TO FACE STD. FACE TO FACE LENGTH	300 lbs / SMOOTH FINISH 3.2 - 6.3 µmRA
19	VALVE SERVICE STANDARD	LARGE FEMALE FACE ANSI B16.5a / 180MM
20	VALVE CYCLIC SERVICE UNI / BI-DIRECTIONAL	PSA HIGH CYCLING DUTY
21	VALVE INITIAL CONTROL POSITION	UNIDIRECTIONAL
22	SHAFT POSITION FLOW DOWN / UPSTREAM	0 - 25%
23	BEARINGS AND EXCLUDER RING MATERIAL	FLOW SHAFT DOWNSTREAM
24	SHAFT PACKING TYPE MATERIAL	FOR HIGH CYCLE BUTTERFLY VALVE
25	DISC PINS SHAFT MATERIAL	LIFE LOADED / PTFE
26	SEAT TYPE MATERIAL	ASTM A487 CA 6 NM / MFR STD / ASME 420
27	LEAKAGE RATE (CLASS TO B16.104)	SOFT SEAT / FKM (VITON)
28	ACTUATOR TYPE / MOUNTING POSITION	CLASS VI BUBBLE TIGHT
29	ACTUATOR SIZE / AIR CONNECTION SIZE	PISTON, SPRING RETURN / A-HU
30	ACTUATOR ACTION	B1JU10/40C / 3/8" NPT
31	AIR SUPPLY PRESSURE MIN. / NORM. / MAX.	AIR TO OPEN
32	SPRING TYPE / ACTION	3,5 / 4,5 / 6,0 kg/cm ² g
33	NUMBER OF CYCLES PER YEAR	SINGLE SPRING / SPRING TO CLOSE
34	VALVE DUTY ON/OFF or CONTROL	+/- 110000
35	VALVE POSITIONER MODEL	HIGH CYCLE DUTY / ON-OFF
36	POSITIONER TYPE	NOT REQUIRED
37	CALIBRATED RANGE	
38	AIR SUPPLY PRESSURE / AIR CONNECTION	
39	AIR FILTER / REGULATOR	4,5 kg/cm ² g / NPTF
40	SOLENOID	NOT REQUIRED
41	PROXIMITY SWITCH / POSITION	SOLENOID INSTALLED BY OTHERS
42	TRAVEL STOP	STONEL SR445B5MDS
43	TUBING & FITTING MATERIAL / SIZE	STANDARD
44	VALVE SUPPLIER	NOT REQUIRED
45	VALVE TYPE NO.	
46	REMARKS :	3" CL300 AC25-Z-B1JU10/40C-LS
47		note 1: Electrical Certificate for -40°C. Functional operation shall be guaranteed for -46°C ambient

This information is proprietary and shall not be disclosed outside your organisation, nor shall it be duplicated, used, or disclosed for any purpose other than as permitted under written agreement with UOP.

C.B. HORMAICH

Dimensions are maximum values (given in millimeters). Weight is approximate value (given in kgs).

MOUNTING POSITION : C-HU



BUTTERFLY VALVE SIZE 080 (03")

RATING ACC. TO ANSI class 300

FLANGE DRILLING ACC. TO ANSI class 300

FACING : ASME B16.5 Large female (Ra 3.2-6.3)

ACTUATOR

TYPE : B1JU10/40C

ACCESSORIES

04. LIMIT SWITCH STONEL SR44B5MDS WITH TWO DIN 19234 SENSORS, 1
CABLE ENTRY M20x1.5 (2 pcs)

PIPING AND FITTINGS : CU/PVC mm - Swagelok Brass
TOTAL WEIGHT : 80 kg

SO NO. : 113520-002

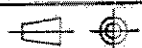
VENDOR / ORDER NO. :

/ 08-03114-P

CUSTOMER / ORDER NO. : UOP N.V. / H6280

TAG. NO. : U-XV75012, U-XV75022, U-XV75032, U-XV75042, U-XV75052

1	03.03.27	CK
ORIG	03.02.17	CK



APPROVED : CK

[Signature]

Field Systems SA

WITTENHEIM
FRANCE

CERTIFIED DIMENSION DRAWING

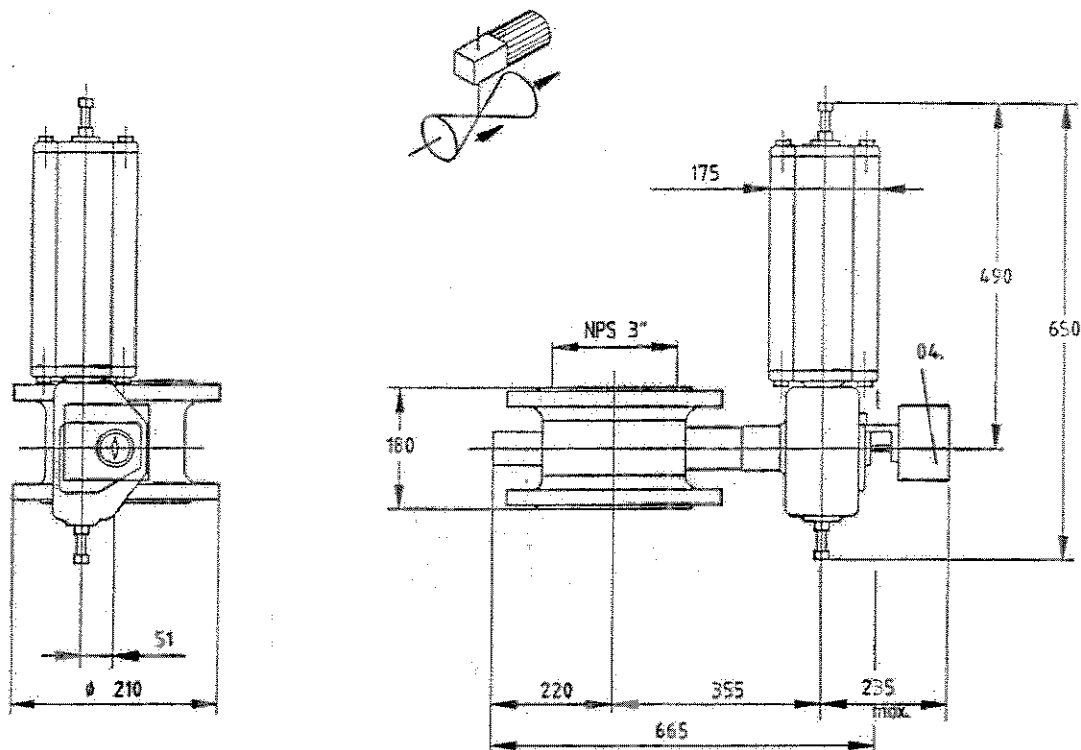
REMOTE SHUT-OFF VALVE

3" CL300 MAPAG AC25-Z-B1JU10/40C-LS

DIM113520-002A

Dimensions are maximum values (given in millimeters). Weight is approximate value (given in kgs).

MOUNTING POSITION : A-HU



BUTTERFLY VALVE SIZE 080 (03")

RATING ACC. TO ANSI class 300

FLANGE DRILLING ACC. TO ANSI class 300

FACING : ASME B16.5 Large female (Ra 3.2-6.3)

ACTUATOR

TYPE : B1JU10/40C

ACCESSORIES

04. LIMIT SWITCH STONEL SR44B5MDS WITH TWO DIN 19234 SENSORS,
CABLE ENTRY M20x1.5 (2 pcs)



PIPING AND FITTINGS : CU/PVC mm - Swagelok Brass

TOTAL WEIGHT : 80 kg

SO NO. : 113520-002

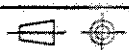
VENDOR / ORDER NO. :

/ OB-03114-P

CUSTOMER / ORDER NO. : UOP N.V. / H6280

TAG. NO. : U-XV75062, U-XV75072, U-XV75082, U-XV75092, U-XV75102

1	03.03.27	CK
ORIG	03.02.17	CK



APPROVED : CK



Field Systems SA

WITTENHEIM
FRANCE

CERTIFIED DIMENSION DRAWING

REMOTE SHUT-OFF VALVE

DIM113520-002B

3" CL300 MAPAG AC25-Z-B1JU10/40C-LS