

AUTOMATIC BUTTERFLY VALVE**PROJECT SPECIFICATION**

Number

E-H6280-241

Rev.

3

Sheet : 3 of 15

By : F. Heyman

R
E
V

1	TAG NO.	
2		U-XCV75011, 75021, 75031, 75041, 75051, 75061
3	QUANTITY	U-XCV75071, 75081, 75091, 75101
4	SERVICE	10
5	MEDIUM COMPOSITION MOLECULAR WEIGHT	FEED / REPRESSURISATION
6	AMBIENT TEMPERATURE MIN. / MAX.	FEED GAS / H ₂ , C ₁ -C ₆ , N ₂ , H ₂ O / 7,23
7	MINIMUM DESIGN METAL TEMPERATURE	-46 / +36 °C ACTUATOR POSITIONER LIMIT SW (note 1)
8	OPERATING TEMPERATURE MIN. / MAX.	-34 °C FOR VALVE BODY AND SEALS
9	OPERATING FLOW COND. 1 / 2 / 3	40,0 / 40,0 °C
10	PRESSURE UPSTREAM COND. 1 / 2 / 3	4480 / 11870 / 36270 Nm ³ /h
11	DP COND. 1 / 2 / 3	38,99 / 38,94 / 38,88 kg/cm ² g
12	DP IN CLOSED POSITION COND. 1 / 2 / 3	10,523 / 9,785 / 0,033 kg/cm ²
13	REQUIRED C _v COND. 1 / 2 / 3	39,0 kg/cm ²
14	VALVE BODY SIZE RATING STYLE	5,7 / 15,6 / 730
15	SELECTED C _v CHARACTERISTIC	DN 150 / 300 lbs / DOUBLE FLANGED
16	BODY MATERIAL	920 / EQUAL PERCENTAGE
17	FLANGE RATING FLANGE FACE FINISH	ASTM 352 LCB (-34°C)
18	FACE TO FACE STD. FACE TO FACE LENGTH	300 lbs / SMOOTH FINISH 3.2 - 6.3 μmRA
19	VALVE SERVICE STANDARD	LARGE-FEMALE FACE ANSI B16.5a / 210MM
20	VALVE CYCLIC SERVICE UNI / BI-DIRECTIONAL	PSA HIGH CYCLING DUTY
21	VALVE INITIAL CONTROL POSITION	UNIDIRECTIONAL
22	SHAFT POSITION FLOW DOWN / UPSTREAM	0 - 25%
23	BEARINGS AND EXCLUDER RING MATERIAL	FLOW SHAFT DOWNSTREAM
24	SHAFT PACKING TYPE MATERIAL	FOR HIGH CYCLE BUTTERFLY VALVE
25	DISC PINS SHAFT MATERIAL	LIFE LOADED / PTFE
26	SEAT TYPE MATERIAL	ASTM A487 CA 6 NM / MFR STD / ASME 420
27	LEAKAGE RATE (CLASS TO B16.104)	SOFT SEAT / FKM (VITON)
28	ACTUATOR TYPE / MOUNTING POSITION	CLASS VI BUBBLE TIGHT
29	ACTUATOR SIZE / AIR CONNECTION SIZE	PISTON, SPRING RETURN / C-HU
30	ACTUATOR ACTION	B1JU12-55C / 1/2" NPT
31	AIR SUPPLY PRESSURE MIN. / NORM. / MAX.	AIR TO OPEN
32	SPRING TYPE / ACTION	3,5 / 4,5 / 6,0 kg/cm ² g
33	NUMBER OF CYCLES PER YEAR	SINGLE SPRING / SPRING TO CLOSE
34	VALVE DUTY ON/OFF or CONTROL	+/- 105120
35	VALVE POSITIONER MODEL	HIGH CYCLE DUTY / CONTROL
36	POSITIONER TYPE	METSO, SMART ND8221/XC EEx ia IIC T6
37	CALIBRATED RANGE	SMART ELECTRO / PNEUMATIC
38	AIR SUPPLY PRESSURE / AIR CONNECTION	4 - 20 mA
39	AIR FILTER / REGULATOR	4,5 kg/cm ² g / NPTF
40	BOOSTER	NOT REQUIRED
41	VALVE POSITION TRANSMITTER	MOORE 61H 1/4"NPT
42	TRAVEL STOP	0-100 % INCORPORATED IN POSITIONER EEx ia IIC T6
43	TUBING & FITTING MATERIAL / SIZE	STANDARD
44	VALVE SUPPLIER	FOR TUBE AND FITTINGS REFER TO E-H6280-241T
45	VALVE TYPE NO.	
46	REMARKS :	6" CL300 AC25 B1JU12/55C ND8221/CXTS1Y-L-Instr
47		note 1: Electrical Certificate for -40°C. Functional operation shall be guaranteed for -46°C ambient

This information is proprietary and shall not be disclosed outside your organisation, nor shall it be duplicated, used, or disclosed for any purpose other than as permitted under written agreement with UOP.

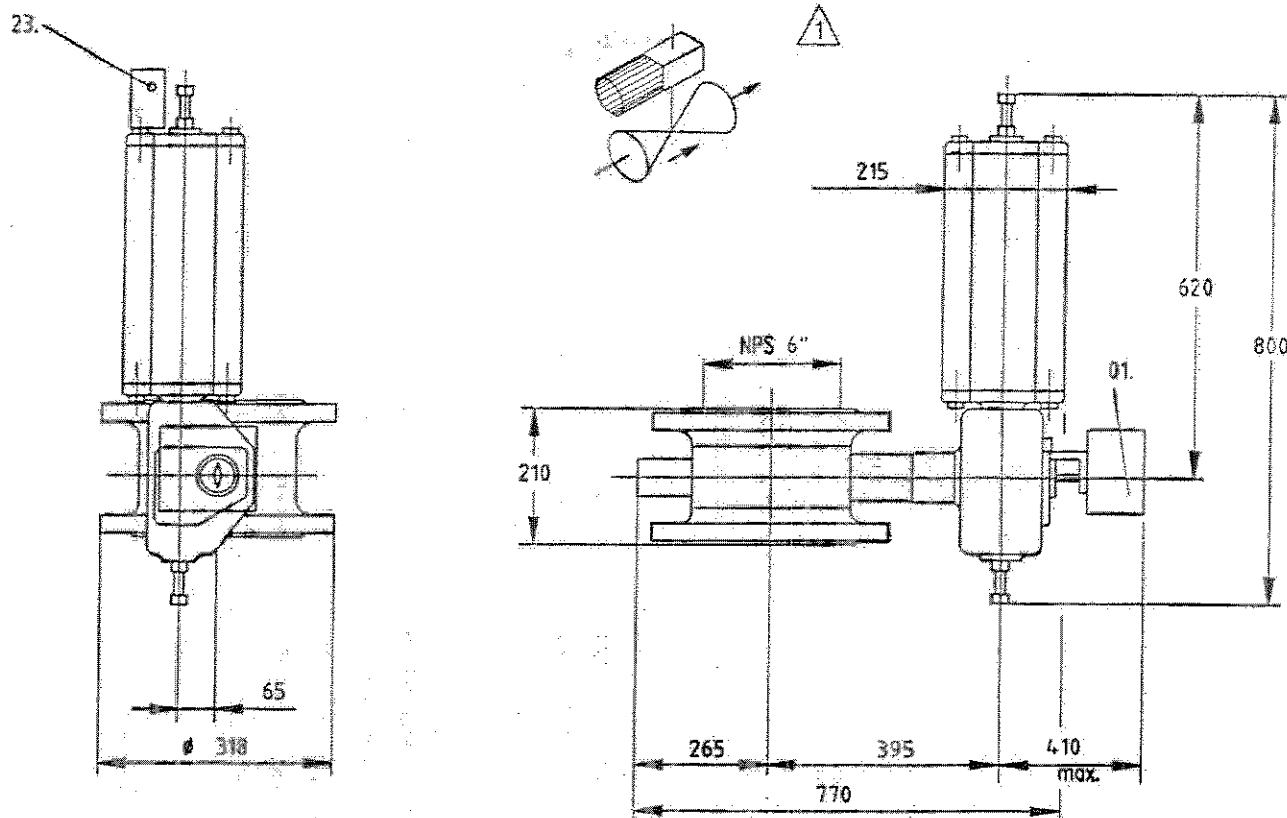
15940000

1325832

C.B. JONMARTON

Dimensions are maximum values (*given in millimeters). Weight is approximate value (given in kgs).

MOUNTING POSITION : C-HU



BUTTERFLY VALVE SIZE 150 (06")

RATING ACC. TO ANSI class 300

FLANGE DRILLING ACC. TO ANSI class 300

FACING : ASME B16.5 Large female (Ra 3.2-6.3)

ACTUATOR

TYPE : B1JU12/55C

ACCESSORIES

01. VALVE CONTROLLER/POSITION TRANSMITTER ND8221/CXT1S1Y-I, EExiallCT6,
WITH SST GAUGES (HOUSING/INTERNAL) GRADUATED IN Kg/cm² /bar/psi ,
MOUNTED WITH ELBOWS TO HAVE VERTICAL READING SCALE, CABLE ENTRY M20x1.5

23. VOLUME BOOSTER 1/4"NPT MOORE 61H

PIPING AND FITTINGS : CU/PVC mm - Swagelok Brass

TOTAL WEIGHT : 180 kg

SO NO. : 113520-001

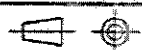
VENDOR / ORDER NO. :

/ OB-03114-P

CUSTOMER / ORDER NO. : UOP N.V. / H6280

TAG. NO. : U-XCV75011, U-XCV75021, U-XCV75031, U-XCV75041, U-XCV75051,
U-XCV75061, U-XCV75071, U-XCV75081, U-XCV75091, U-XCV75101

1	03.03.27	CK
ORIG	03.02.17	CK



APPROVED : CK

[Signature]

Field Systems SA

WITTENHEIM
FRANCE

CERTIFIED DIMENSION DRAWING

CONTROL VALVE

DIM113520-001

6" CL300 MAPAG AC25-Z-B1JU12/55C-ND8221/CXT1S1Y-I-Instr.